



Document ID: MATY088	Version: 1.0
Facilitated by: Manisha Beck, RMO	Last reviewed: September 2014
Approved by: Maternity Quality Committee	Review date: September 2017

Uterine Artery Doppler at 20 Weeks Guidelines

Hutt Maternity Policies provide guidance for the midwives and medical staff working in Hutt Maternity Services. Please discuss policies relevant to your care with your Lead Maternity Carer.

Purpose

To provide clinical guidance for ordering uterine artery doppler at 20 weeks gestation

Scope

To all obstetric staff

Acronyms

PAPP-A: Pregnancy associated plasma protein A

HCG: Human chorionic gonadotrophin

MoM: Multiples of median

PET: Pre eclamptic toxemia

IUGR: Intra uterine growth restriction

MSS1: Maternal serum screen (first trimester)

Indications

- Previous severe PET/PET at <32 weeks
- Previous severe IUGR
- Anti-Phospholipid Syndrome
- Essential or Chronic Hypertension
- Known renal disease
- Low PAPP-A on MSS1 (<0.4 MoM)
- Elevated b-HCG on MSS1(>5 MoM)

Reference

NZMFM network: Obstetric Doppler Guidelines

Capital and Coast DHB: MFM guidelines on uterine A Doppler.

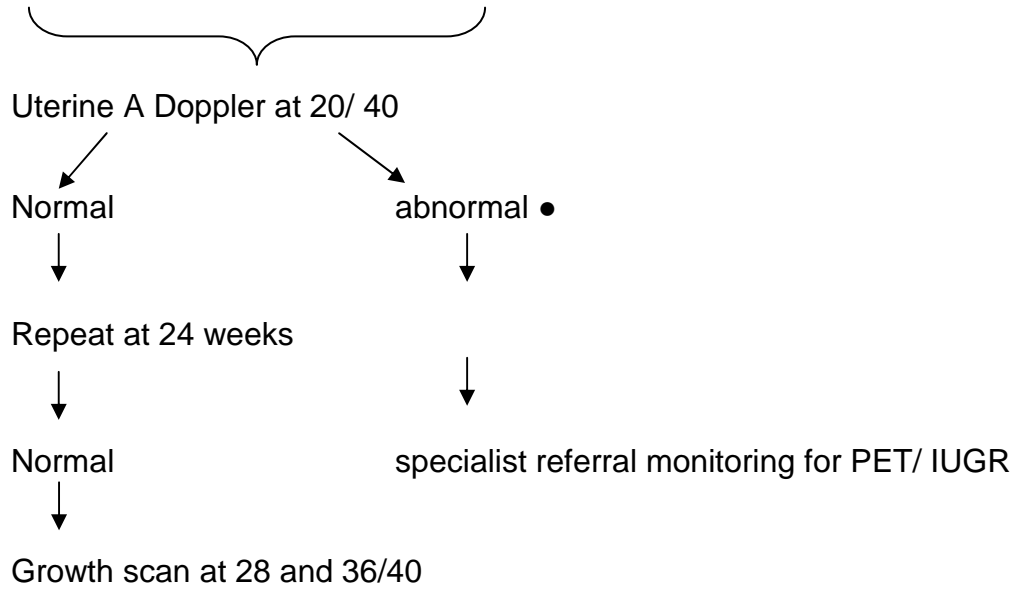
Informed Consent

The right of a consumer to make an informed choice and give informed consent, including the right to refuse medical treatment, is enshrined in law and in the Code of Health and Disability Consumers' Rights in New Zealand. This means that a woman can choose to decline treatment, referral to another practitioner, or transfer of clinical responsibility. If this occurs follow the process map on page 18 of the Referral Guidelines (Ministry of Health, 2012).

ALGORITHM FOR USE OF UTERINE A DOPPLER FOR SCREENING WOMEN AT RISK OF DEVELOPING PET

At MSS1

PAPP-A \leq 0.4MOM and / or
HCG $>$ 5MOMd/or high risk factors for PET



●Abnormal uterine A Doppler: Uterine a Doppler \geq 95th centile for the gestational age and/or presence of diastolic notch in one or both the uterine arteries.